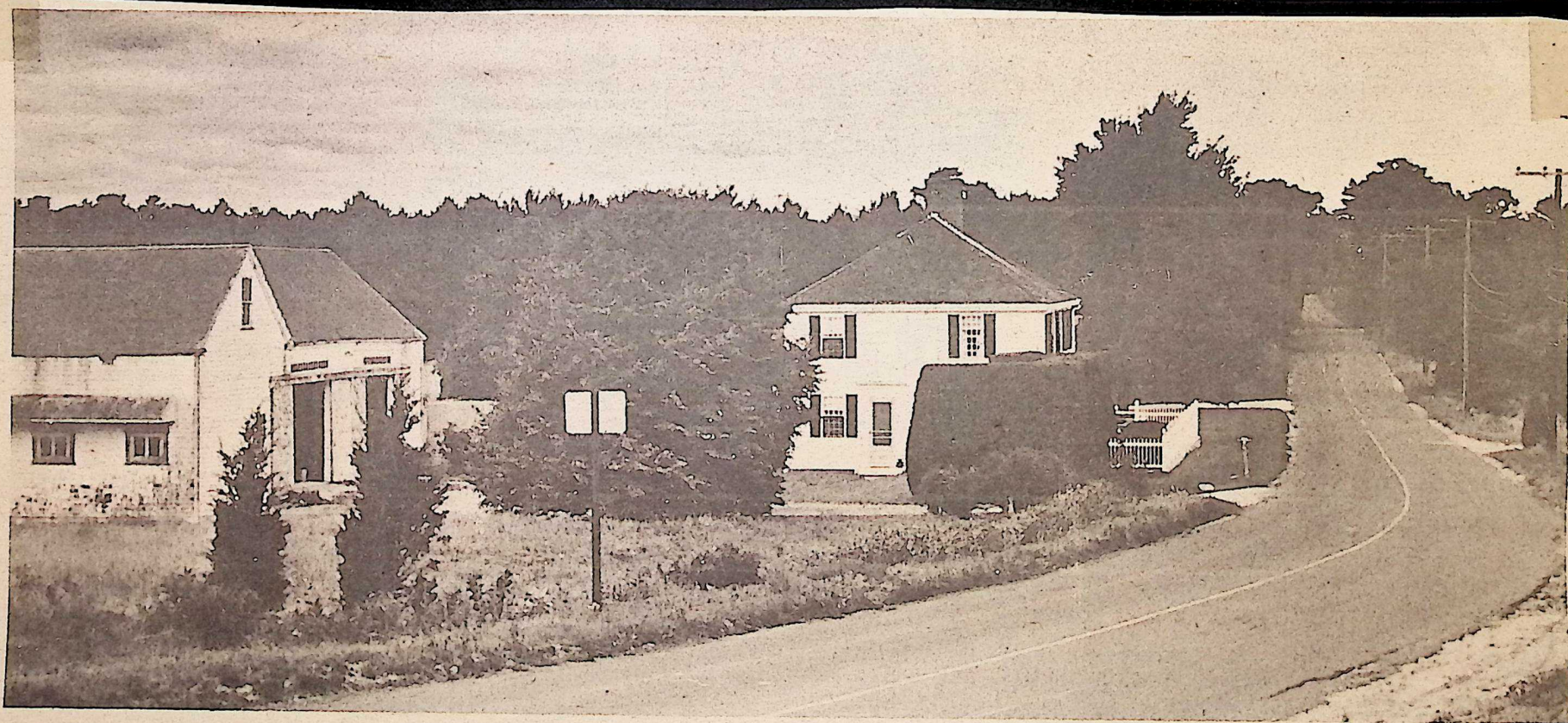


This 1865 photograph shows children standing by the old hay scales in Osterville, now the location of the flag pole at Mulberry Corners. Road to the right is Parker Road. Church at left is the old Methodist

church, and house in center is now the location of the Mulberry Corners shops. (Photo from the Chesbro Collection, courtesy of the Osterville Historical Society)



Ominous clouds rolled in over South County Road in Osterville last Friday in preparation for a weekend of rain.