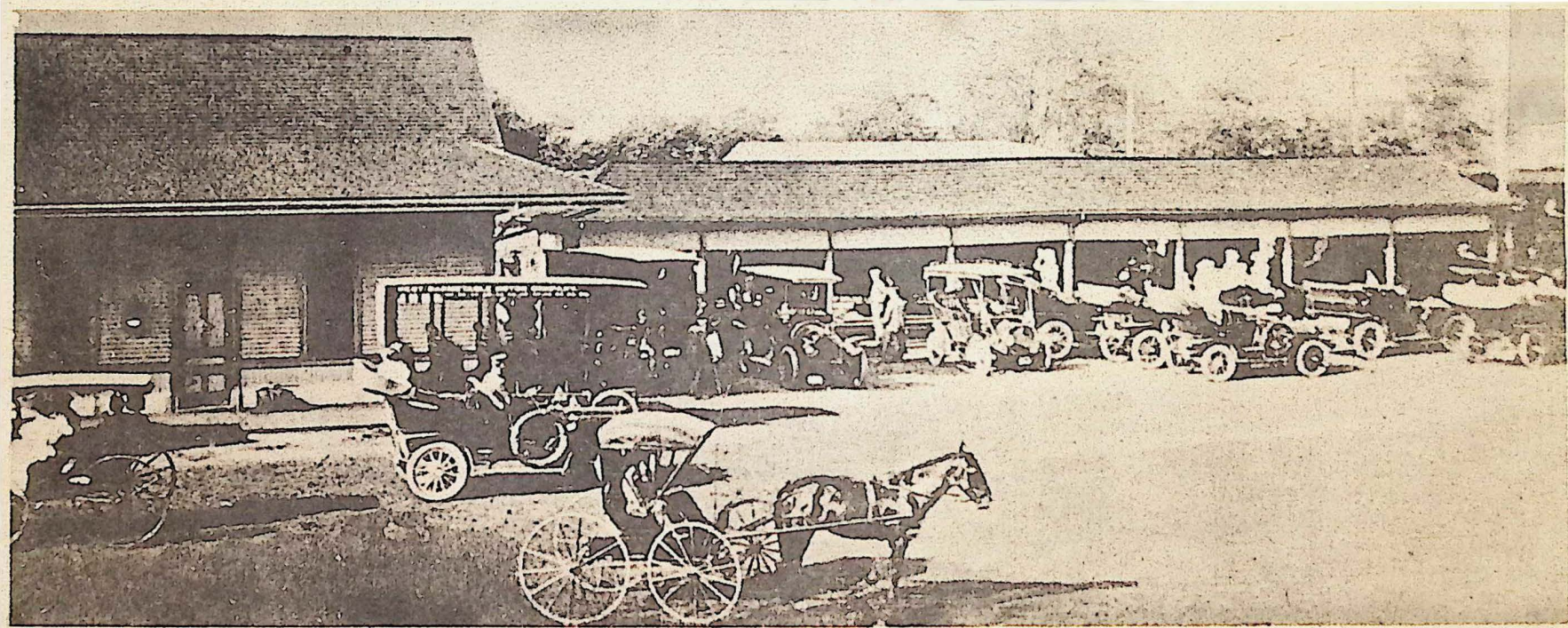




An Osterville man walks to his car after a visit to the Post Office on yet another snowy Cape Cod day.

(Village Advertiser photo by Mark Coté)



This photo [circa 1890] shows the West Barnstable Railroad Station as it was in its heyday. It is a sharp contrast to the present rail

situation which faces the threat of possible extinction here on Cape Cod. (Photo courtesy of the Cotuit/Santuit Historical Society)