



30 cents

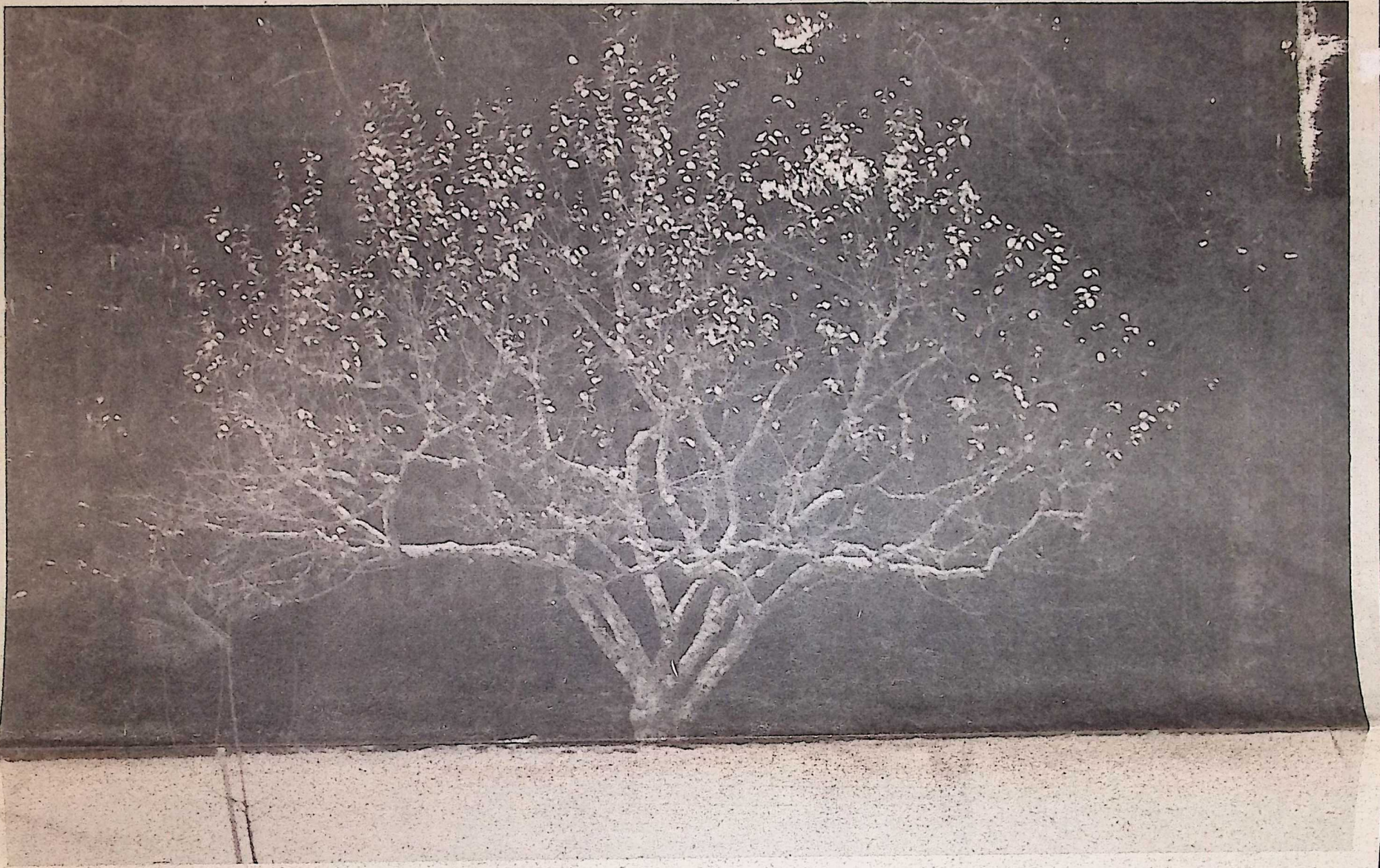
# VILLAGE ADVERTISER

For The Town of Barnstable and Her People

Volume 15 Number 24 November 22, 1984

## INSIDE

### 1984 Christmas Gift Guide



A pre-winter snow scene graced the mid-Cape area last Wednesday morning. Above, crab apple tree and an inch of snow in Marstons Mills. (Photo by Mark Cote)

## Osterville Historical Society

# A First Step Toward Cammett House Goals

by Andrea Leonard

In 1982 a matching pair of ladderback chairs with teardrop finials were given to the Osterville Historical Museum by Mrs. Roger Wellington of Boston and Wianno. One of the pair is a rocker; the other, a straight side chair. Both have rush seats (quite certainly new), cherry legs and back posts, three oaken back slats, and oak rungs. Jeff Groff, museum curator, believes two of the three slats in the rocking chair may be replacements. These chairs, dating to the 1850s, are entirely suitable in period and style to the newer sections of the Cammett House, the museum's most recent structural acquisition.

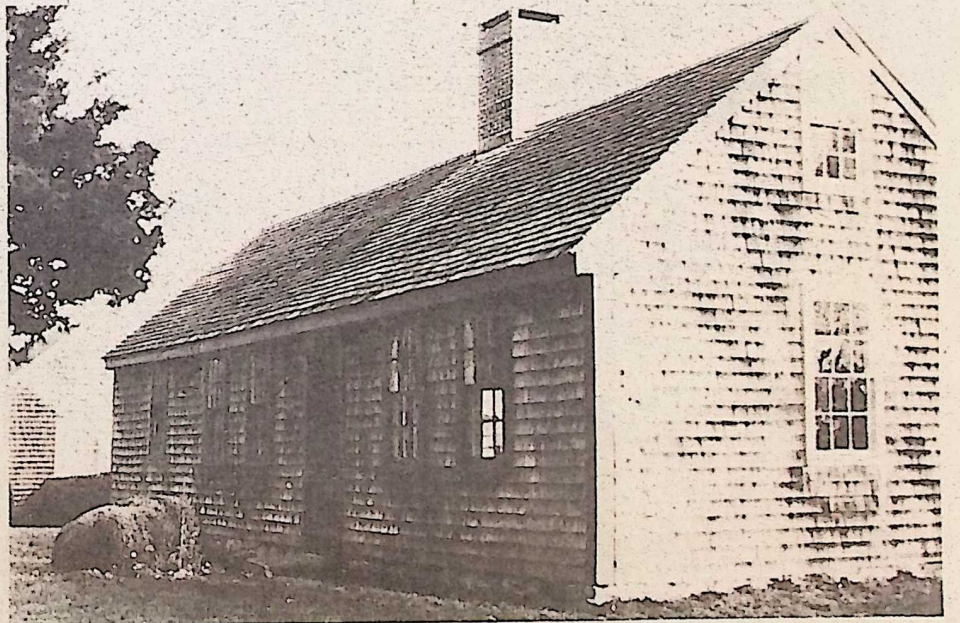
Furnishing the Cammett House appropriately is a task that may well carry the museum society forward for many years, quite possibly into the 21st century. Mrs. Wellington's chairs, even though they did not originate in Osterville or even on Cape Cod, are but a first step toward the museum's distant goal. The chairs came to the Wellingtons through his maternal aunt, wife of Gaston Lachaise (1882-1935), a sculptor born in Paris, France. Lachaise immigrated to this country in 1906 and was naturalized in 1916; he is probably best known for his sculpture at Rockefeller Center's skating rink in New York City. At the time of his death, Lachaise owned a farmhouse in Georgetown, Maine; when his estate was settled, the chairs were given to his wife's sister who passed them along to her son, Roger Wellington.

A third ladderback, small, very delicate, and painted black, with a woven seat that may be original, has also been donated by Mrs. Wellington. No history of this chair is known.

Shortly after these gifts were made, the museum received in March, 1983, from Mrs. E. Joslyn Whitney of West Hyannis Port, three more chairs. One, a circa 1820 Windsor with a even-spindle back, is lacquered black. An even older four-lat ladderback may date from the 18th century, and its rush

**The Osterville Historical Society's Cammett House has been an ongoing restoration project since 1981. The society is still seeking donations for the Cammett House Fund.**

(Photo by Pat Germani)



seat may be original. In fair condition, this chair has been repaired, its left front leg replaced. The chair is entirely covered (including the rush seat) with off-white paint. A third chair, a small ladderback lacking a seat, completes Mrs. Whitney's gift. Although no specific details of the chairs' histories are known, Mrs. Whitney believes all three came

from Chatham.

Certain to assume a prominent position in the Cammett House is a sofa donated by Miss Zilpha Wright of Osterville. For many years the sofa stood on her mother's sunporch and served for afternoon naps when she was a child. Considerable

Continued on page 2